



KCA Laboratories  
232 North Plaza Drive  
Nicholasville, KY 40356

(833) 522-5227  
https://kcalabs.com  
KDA Lic.# P\_0058

Certificate of Analysis

1 of 6

## Heritage-1-2020

Sample ID: 2011KCA0721.2227  
Cultivar: N/A  
Matrix: Concentrates & Extracts  
Type: Distillate  
Sample Size:

Received: 11/24/2020  
Completed: 12/03/2020  
Batch#: 11-19-20-01

Client:  
Exceptional Extractions  
Lic.#  
3838 HWY 18 North  
Sparta, NC 28675



### Summary

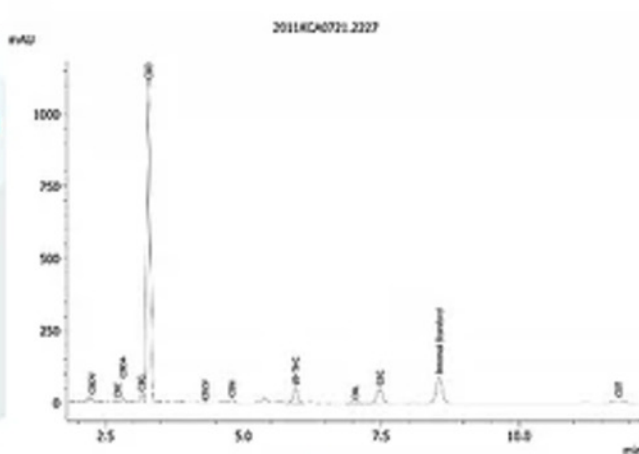
Test	Date Tested	Result
Cannabinoids	12/01/2020	Complete
Terpenes	12/02/2020	Complete
Residual Solvents	12/02/2020	Complete
Microbials	11/29/2020	Complete
Pesticides	12/03/2020	Complete
Heavy Metals	12/01/2020	Complete

### Cannabinoids by HPLC-PDA

Complete

2.9873%	85.4014%	93.7455%	NT Not Tested	Not Tested
Total THC	Total CBD	Total Cannabinoids	Moisture Content	Foreign Matter

Analyte	LOD	LOQ	Result	Result
	%	%	%	mg/g
CBC	0.0095	0.0284	2.9822	29.822
CBCA	0.0181	0.0543	ND	ND
CBCV	0.0060	0.0180	0.0413	0.413
CBD	0.0081	0.0242	84.8480	848.480
CBDA	0.0043	0.0130	0.6309	6.309
CBDV	0.0061	0.0182	0.6270	6.270
CBDVA	0.0021	0.0063	ND	ND
CBG	0.0057	0.0172	1.1361	11.361
CBGA	0.0049	0.0147	ND	ND
CBL	0.0112	0.0335	0.1521	1.521
CBLA	0.0124	0.0371	ND	ND
CBN	0.0056	0.0169	0.3406	3.406
CBNA	0.0060	0.0181	ND	ND
Δ8-THC	0.0104	0.0312	ND	ND
Δ9-THC	0.0076	0.0227	2.9873	29.873
THCA	0.0084	0.0251	ND	ND
THCV	0.0069	0.0206	ND	ND
THCVA	0.0062	0.0186	ND	ND
Total THC			2.9873	29.873
Total CBD			85.4014	854.014
Total			93.7455	937.455



Total THC = THCA \* 0.877 + Δ9-THC

Total CBD = CBDA \* 0.877 + CBD

LOD = Limit of Detection

LOQ = Limit of Quantitation

ND = None Detected

For plant material, the reported result is based on a sample weight with the applicable moisture content for that sample.



*Wes Rogers*

Wes Rogers  
Principal Scientist  
12/03/2020



ISO/IEC 17025:2017 Accredited  
Accreditation #106631

This product or substance has been tested by KCA Laboratories using validated testing methodologies and a quality system. Values reported relate only to the product or substance tested. KCA Laboratories makes no claims as to the efficacy, safety or other risks associated with any detected or non-detected amounts of any substances reported herein. This Certificate of Analysis shall not be reproduced except in full, without the written approval of KCA Laboratories.



KCA Laboratories  
232 North Plaza Drive  
Nicholasville, KY 40356

(833) 522-5227  
<https://kcalabs.com>  
KDA Lic.# P\_0058

Certificate of Analysis

2 of 6

## Heritage-1-2020

Sample ID: 2011KCA0721.2227

Cultivar: N/A

Matrix: Concentrates & Extracts

Type: Distillate

Sample Size:

Received: 11/24/2020

Completed: 12/03/2020

Batch#: 11-19-20-01

Client

Exceptional Extractions

Lic.#

3838 HWY 18 North

Sparta, NC 28675



### Heavy Metals by ICP-MS

Complete

Analyte	LOD	LOQ	Mass
	µg/g	µg/g	µg/g
Arsenic	0.002	0.02	ND
Cadmium	0.001	0.02	ND
Lead	0.002	0.02	ND
Mercury	0.012	0.05	ND

Date Tested: 12/01/2020  
LOD = Limit of Detection  
LOQ = Limit of Quantitation  
ND = None Detected



Wes Rogers  
Principal Scientist  
12/03/2020

This product or substance has been tested by KCA Laboratories using validated testing methodologies and a quality system. Values reported relate only to the product or substance tested. KCA Laboratories makes no claims as to the efficacy, safety or other risks associated with any detected or non-detected amounts of any substances reported herein. This Certificate of Analysis shall not be reproduced except in full, without the written approval of KCA Laboratories.



KCA Laboratories  
232 North Plaza Drive  
Nicholasville, KY 40356

(833) 522-5227  
https://kcalabs.com  
KDA Lic.# P\_0058

Certificate of Analysis

3 of 6

## Heritage-1-2020

Sample ID: 2011KCA0721.2227

Cultivar: N/A

Matrix: Concentrates & Extracts

Type: Distillate

Sample Size:

Received: 11/24/2020

Completed: 12/03/2020

Batch#: 11-19-20-01

Client:

Exceptional Extractions

Lic.#

3838 HWY 18 North

Sparta, NC 28675

### Pesticides by LCMS/MS & GCMS/MS

Complete

Analyte	LOD	LOQ	Mass	Analyte	LOD	LOQ	Mass
	PPM	PPM	PPM		PPM	PPM	PPM
Abamectin	0.001	0.005	ND	Fonicamid	0.001	0.005	ND
Acephate	0.001	0.005	ND	Fludioxonil	0.001	0.005	ND
Acetamiprid	0.001	0.005	ND	Hexythiazox	0.001	0.005	ND
Aldicarb	0.001	0.005	ND	Imazalil	0.001	0.005	ND
Azoxystrobin	0.001	0.005	ND	Imidacloprid	0.001	0.005	ND
Bifenazate	0.001	0.005	ND	Methomyl	0.001	0.005	ND
Bifenthrin	0.001	0.005	ND	Mevinphos	0.001	0.005	ND
Boscalid	0.001	0.005	ND	Myclobutanil	0.001	0.005	ND
Carbaryl	0.001	0.005	ND	Naled	0.001	0.005	ND
Carbofuran	0.001	0.005	ND	Oxamyl	0.001	0.005	ND
Chlorantraniliprole	0.001	0.005	ND	Permethrin	0.001	0.005	ND
Chlorfenapyr	0.001	0.005	ND	Phosmet	0.001	0.005	ND
Chlorpyrifos	0.001	0.005	ND	Piperonyl Butoxide	0.001	0.005	ND
Clofentezine	0.001	0.005	ND	Propoxur	0.001	0.005	ND
Daminozide	0.001	0.005	ND	Pyridaben	0.001	0.005	ND
Diazinon	0.001	0.005	ND	Spinetoram	0.001	0.005	ND
Dimethoate	0.001	0.005	ND	Spinosad	0.001	0.005	ND
Dimethomorph	0.001	0.005	ND	Spiromesifen	0.001	0.005	ND
Ethoprophos	0.001	0.005	ND	Spirotetramat	0.001	0.005	ND
Etofenprox	0.001	0.005	ND	Spiroxamine	0.001	0.005	ND
Etoxazole	0.001	0.005	ND	Tebuconazole	0.001	0.005	ND
Fenoxycarb	0.001	0.005	ND	Thiacloprid	0.001	0.005	ND
Fenpyroximate	0.001	0.005	ND	Thiamethoxam	0.001	0.005	ND
Fipronil	0.001	0.005	ND	Trifloxystrobin	0.001	0.005	ND

Date Tested: 12/01/2020  
LOD = Limit of Detection  
LOQ = Limit of Quantitation  
ND = None Detected



Wes Rogers  
Principal Scientist  
12/03/2020

This product or substance has been tested by KCA Laboratories using validated testing methodologies and a quality system. Values reported relate only to the product or substance tested. KCA Laboratories makes no claims as to the efficacy, safety or other risks associated with any detected or non-detected amounts of any substances reported herein. This Certificate of Analysis shall not be reproduced except in full, without the written approval of KCA Laboratories.



KCA Laboratories  
232 North Plaza Drive  
Nicholasville, KY 40356

(833) 522-5227  
<https://kcalabs.com>  
KDA Lic.# P\_0058

Certificate of Analysis

4 of 6

## Heritage-1-2020

Sample ID: 2011KCA0721.2227

Cultivar: N/A

Matrix: Concentrates & Extracts

Type: Distillate

Sample Size:

Received: 11/24/2020

Completed: 12/03/2020

Batch#: 11-19-20-01

Client

**Exceptional Extractions**

Lic.#

3838 HWY 18 North

Sparta, NC 28675

## Microbials by qPCR

Complete

### Analyte

Result

CFU/g

Aerobic Bacteria

Not Detected in 1g

Shiga toxin-producing E. Coli

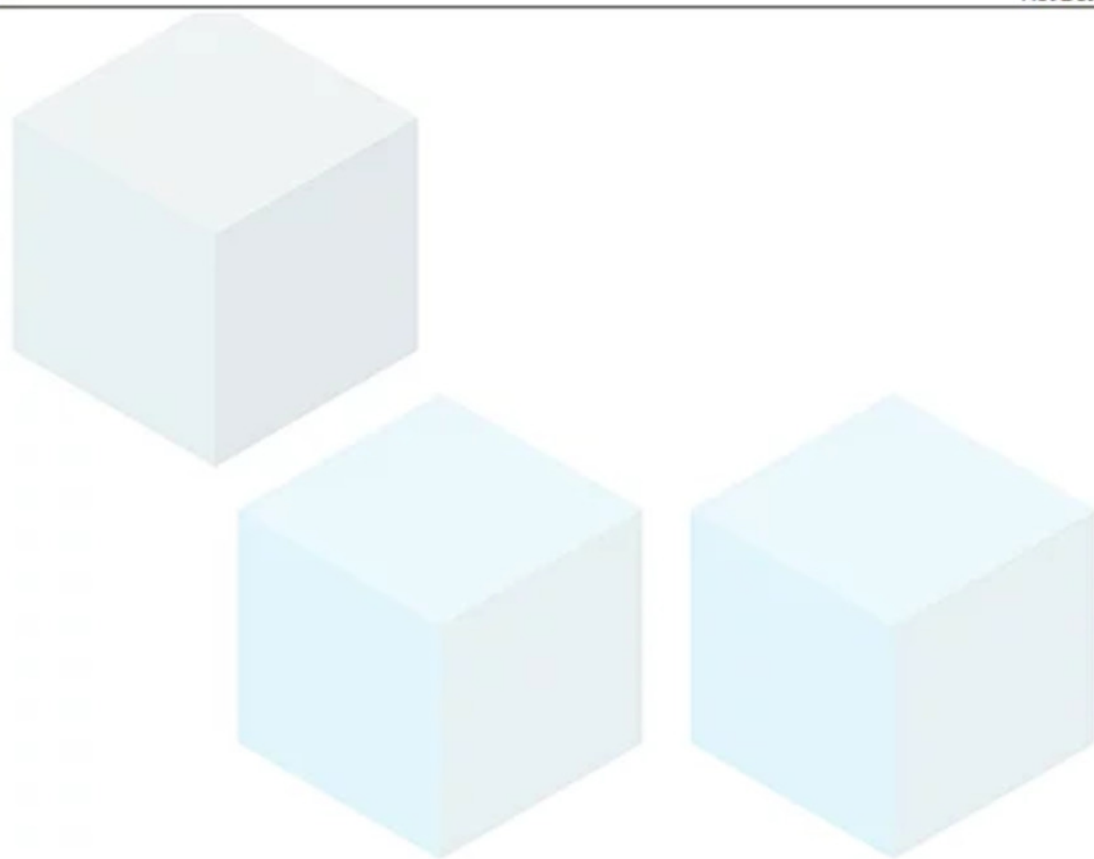
Not Detected in 1g

Enterobacteriaceae

Not Detected in 1g

Salmonella

Not Detected in 1g



Date Tested: 11/29/2020

TNTC = Too Numerous to Count; Unless otherwise stated all quality control samples performed within specifications established by the Laboratory.



Wes Rogers  
Principal Scientist  
12/03/2020

This product or substance has been tested by KCA Laboratories using validated testing methodologies and a quality system. Values reported relate only to the product or substance tested. KCA Laboratories makes no claims as to the efficacy, safety or other risks associated with any detected or non-detected amounts of any substances reported herein. This Certificate of Analysis shall not be reproduced except in full, without the written approval of KCA Laboratories.



KCA Laboratories  
232 North Plaza Drive  
Nicholasville, KY 40356

(833) 522-5227  
https://kcalabs.com  
KDA Lic.# P\_0058

Certificate of Analysis

5 of 6

## Heritage-1-2020

Sample ID: 2011KCA0721.2227

Cultivar: N/A

Matrix: Concentrates & Extracts

Type: Distillate

Sample Size:

Received: 11/24/2020

Completed: 12/03/2020

Batch#: 11-19-20-01

Client

Exceptional Extractions

Lic.#

3838 HWY 18 North

Sparta, NC 28675

### Residual Solvents by HS-GC/MS

Complete

Analyte	LOD PPM	LOQ PPM	Mass PPM	Analyte	LOD PPM	LOQ PPM	Mass PPM
Acetone	0.5	1	ND	Heptane	0.5	1	ND
Acetonitrile	0.5	1	ND	Isobutane	0.5	1	ND
Benzene	0.5	1	ND	Isopropanol	0.5	1	ND
Butane	0.5	1	ND	Isopropyl-Acetate	0.5	1	ND
1-Butanol	0.5	1	ND	Methanol	0.5	1	ND
2-Butanol	0.5	1	ND	2-Methyl-Butane	0.5	1	ND
2-Butanone	0.5	1	ND	2-Methyl-Pentane	0.5	1	ND
Chloroform	0.5	1	ND	3-Methyl-Pentane	0.5	1	ND
Cumene	0.5	1	ND	Methylene-Chloride	0.5	1	ND
Cyclohexane	0.5	1	ND	N,N-Dimethyl-Acetamide	0.5	1	ND
1,2-Dichloro-Ethane	0.5	1	ND	N,N-Dimethyl-Formamide	0.5	1	ND
1,2-Dimethoxy-Ethane	0.5	1	ND	Neopentane	0.5	1	ND
2,2-Dimethyl-Butane	0.5	1	ND	1-Pentanol	0.5	1	ND
2,3-Dimethyl-Butane	0.5	1	ND	Propane	0.5	1	ND
Dimethyl sulfoxide	0.5	1	ND	1-Propanol	0.5	1	ND
1,4-Dioxane	0.5	1	ND	Pyridine	0.5	1	ND
Ethanol	0.5	1	3.574	Sulfolane	0.5	1	ND
2-Ethoxy-Ethanol	0.5	1	ND	Tetrahydrofuran	0.5	1	ND
Ethyl-Acetate	0.5	1	ND	Toluene	0.5	1	ND
Ethyl-Benzene	0.5	1	ND	Trichloroethene	0.5	1	ND
Ethyl-Ether	0.5	1	ND	Xylenes	0.5	1	ND
Ethylene glycol	0.5	1	ND	n-Hexane	0.5	1	ND
Ethylene oxide	0.5	1	ND	n-Pentane	0.5	1	ND

Date Tested: 12/03/2020  
LOD = Limit of Detection  
LOQ = Limit of Quantitation  
ND = None Detected



Wes Rogers  
Principal Scientist  
12/03/2020

This product or substance has been tested by KCA Laboratories using validated testing methodologies and a quality system. Values reported relate only to the product or substance tested. KCA Laboratories makes no claims as to the efficacy, safety or other risks associated with any detected or non-detected amounts of any substances reported herein. This Certificate of Analysis shall not be reproduced except in full, without the written approval of KCA Laboratories.



KCA Laboratories  
232 North Plaza Drive  
Nicholasville, KY 40356

(833) 522-5227  
https://kcalabs.com  
KDA Lic.# P\_0058

Certificate of Analysis

6 of 6

## Heritage-1-2020

Sample ID: 2011KCA0721.2227

Cultivar: N/A

Matrix: Concentrates & Extracts

Type: Distillate

Sample Size:

Received: 11/24/2020

Completed: 12/03/2020

Batch#: 11-19-20-01

Client

Exceptional Extractions

Lic.#

3838 HWY 18 North

Sparta, NC 28675

## Terpenes by HS-GC/MS

Analyte	LOD	LOQ	Mass	Mass	
	%	%	%	mg/g	
$\alpha$ -Bisabolol	0.00001	0.00005	ND	ND	
Borneol	0.00001	0.00005	ND	ND	
Camphene	0.00001	0.00005	ND	ND	
Camphor	0.00001	0.00005	ND	ND	
3-Carene	0.00001	0.00005	ND	ND	
Caryophyllene oxide	0.00001	0.00005	ND	ND	
$\beta$ -Caryophyllene	0.00001	0.00005	0.000693	0.00693	
$\alpha$ -Cedrene	0.00001	0.00005	ND	ND	
Cedrol	0.00001	0.00005	ND	ND	
Endo-Fenchylalcohol	0.00001	0.00005	ND	ND	
Eucalyptol	0.00001	0.00005	ND	ND	
Fenchone	0.00001	0.00005	ND	ND	
Geraniol	0.00001	0.00005	ND	ND	
Geranyl acetate	0.00001	0.00005	ND	ND	
Guaiol	0.00001	0.00005	0.000281	0.00281	
Hexahydro thymol	0.00001	0.00005	ND	ND	
$\alpha$ -Humulene	0.00001	0.00005	0.000196	0.00196	
Isoborneol	0.00001	0.00005	ND	ND	
Isopulegol	0.00001	0.00005	ND	ND	
Limonene	0.00001	0.00005	ND	ND	
Linalool	0.00001	0.00005	ND	ND	
$\beta$ -Myrcene	0.00001	0.00005	ND	ND	
Nerol	0.00001	0.00005	ND	ND	
Ocimene	0.00001	0.00005	ND	ND	
$\alpha$ -Phellandrene	0.00001	0.00005	ND	ND	
$\alpha$ -Pinene	0.00001	0.00005	ND	ND	
$\beta$ -Pinene	0.00001	0.00005	ND	ND	
Pulegone	0.00001	0.00005	ND	ND	
Sabinene	0.00001	0.00005	ND	ND	
Sabinene hydrate	0.00001	0.00005	ND	ND	
$\alpha$ -Terpinene	0.00001	0.00005	ND	ND	
$\gamma$ -Terpinene	0.00001	0.00005	ND	ND	
$\alpha$ -Terpineol	0.00001	0.00005	ND	ND	
$\gamma$ -Terpineol	0.00001	0.00005	ND	ND	
Terpinolene	0.00001	0.00005	ND	ND	
Valencene	0.00001	0.00005	ND	ND	
cis-Nerolidol	0.00001	0.00005	ND	ND	
trans-Nerolidol	0.00001	0.00005	ND	ND	
Total			0.00000	0.00000	

## Primary Aromas



Date Tested: 12/01/2020  
LOD = Limit of Detection  
LOQ = Limit of Quantitation  
ND = None Detected



Wes Rogers  
Principal Scientist  
12/03/2020

This product or substance has been tested by KCA Laboratories using validated testing methodologies and a quality system. Values reported relate only to the product or substance tested. KCA Laboratories makes no claims as to the efficacy, safety or other risks associated with any detected or non-detected amounts of any substances reported herein. This Certificate of Analysis shall not be reproduced except in full, without the written approval of KCA Laboratories.